

FREE PATTERN TIPS

TARTAN

318 LORD STREET HIGHGATE WESTERN AUSTRALIA 6003

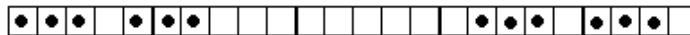
Phone +61-8-93283050 FAX +61-8-93286696
tony@dormani-yarns.com
www.dormani-yarns.com

This Pattern/Tips have been tested for accuracy, Dormani Yarns, however, cannot accept responsibility for typographical errors or misinterpretation of instructions.

Read Instructions completely before you start!

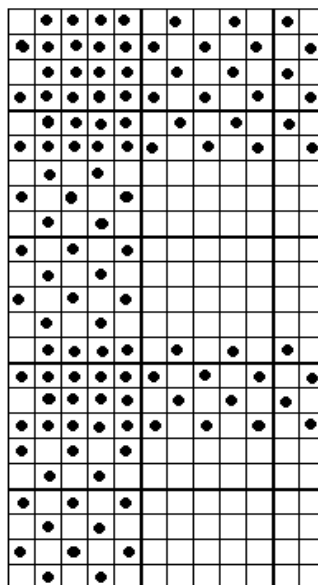
Skill Level: Basic

The basic tartan can be achieved by using a stripped pattern (refer to pattern P1). Knit the pattern in three colours leaving the main yarn but alternating the contrast yarns at irregular intervals (if the changes are regular you finish up with a block pattern). Try 10 rows colour 1; 2 rows colour 2 or 8 rows colour 1; 4 rows colour 2. The combinations can be simple or as complex as you wish. Use Bottle as your main yarn with gold and red as contrasts – a classic colour combination – or explore the pastels – Aran, main yarn with dusty pink and lilac as contrasts. A rebel stripe now and again was mentioned so try knitting the 10 rows/2 rows combination with the third colour turquoise. 10 rows colour 1; 2 rows colour 2; 10 rows colour 1; 2 rows colour 2; 10 rows colour 1; 2 rows colour 3 and repeat from the beginning.



PATTERN P1

The second option is to take an existing check pattern (refer to pattern P2) and create the tartan by colour changing. This sort of pattern works well in two colours but by introducing 3 or 4 colours the visual impact changes dramatically. This simple little check pattern is easy to manipulate. Leave main yarn in feeder changing only the contrast yarns as follows: 6rs C1; 4rs C2; 8rs C1; 6rs C2 repeat. As a variation try 6rs C1; 4rs C2; 8rs C1; 6rs C3 repeat. Or 6rs C1; 4rs C2; 4rs C3; 4rs C2; 6rs C3 repeat. If the prospect of this entire colour changing is too daunting try one pattern repeat C1; 1 C2; 1 C3 – not as dramatic but the look will still be eye-catching. This type of knitting is ideal for using up all those ends of cones, 100gms goes a long way when used in conjunction with other yarns. So far only changing contrast yarns have been suggested but why not try changing the main yarn too. For something quite different have the darker yarn in feeder 2 then change the main yarn: 10rs C1; 14rs C2 repeat. When changing main yarns do so when the carriage is on the right so the two yarns don't cross.



PATTERN P2

For those knitters who have a linker the tartan look can be created with no floats – it's so easy. Stay with the three selected colours and all there is to do is knit stripes. Do 10rs main yarn; 4rs C1; 10rs main yarn; 4rs C2 repeat. However before knitting the fabric transfer every 10th stitch to the adjacent needle leaving the empty needle out of work. Knit a sample of 4 repeats of the sequence.

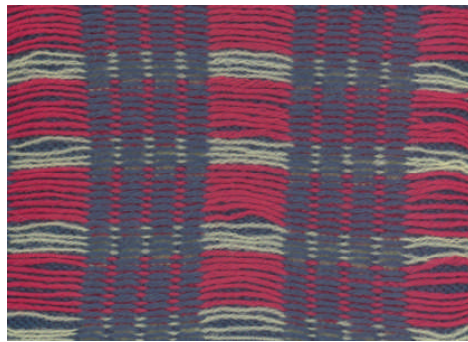
Using either one of the contrast yarns and or an additional colour link along the ladders formed by the out of work needle. When placing the fabric onto the linker stretch the work just a little and have the right side facing the linker. Great for kid's garments and no floats to worry about. If knitters do not have a linker the same effect can be achieved by latching up the ladder with the contrast yarn. Try 2 ends for a more pronounced look.

This is the basic to tartan design, try some combinations of your own and remember pastels will work as well as the more traditional strong colours.

The fun will really start when all the ends of cones are lined up and knitters start to experiment with colour. Try some brights, purple, orange, hot pink, cerise or lime with more subtle tones, after all it's only for two or four rows now and again. The tip is not to look at the cones and say it won't work – just try it. Some of the most talked about garments are created in this way. Another idea, which can give a superb yet an unexpected result, is to combine two or three ends of fine yarns together. Crepe, Hobby, Silky, and Boucle etc

MATERIALS: Yeoman SPORT Yeoman 4PLY CASHMILON Yeoman CITADELLA	SIZES:	GAUGE/TENSION: T8
--	---------------	--

SAMPLES:



PATTERN 1



PATTERN 2



PATTERN 3